

Korea JTC1/SC2, Committee on Character Codes

KIM, Kyongsok (GIM, Gyeongseog), Chairperson of Korea JTC1/SC2

email: gimgs0 AT gmail DOT com, phone: +82-51-510-2292

address: Division of Computer Science and Engineering,

Pusan National University

63 Beon Gil 2, Busandaehagro Geumjeonggu, BUSAN 609-735, Rep. of KOREA

Author: YANG Wangsung & KIM Kyongsok

Date: 2011-03-03

Status: National Body Position, Rep. of KOREA

Subject: R. O. Korea's Comments on "Proposal for Encoding Chinese Chess
Symbol in the SMP (WG2 N3910)"

Related docs: WG2 N3910, R. O. Korea JTC1/SC2 K1980

1. Background

- In WG2 N3910, "Proposal for Encoding Chinese Chess Symbol in the SMP of the UCS" (2010-09-16), P. R. China proposed to add 22 symbols for pieces of Chinese chess and 12 symbols for drawing a Chinese chess board.

- R. O. Korea reviewed the document and would like to give the following suggestions.

1.1 Pieces of Chinese chess played in R. O. Korea

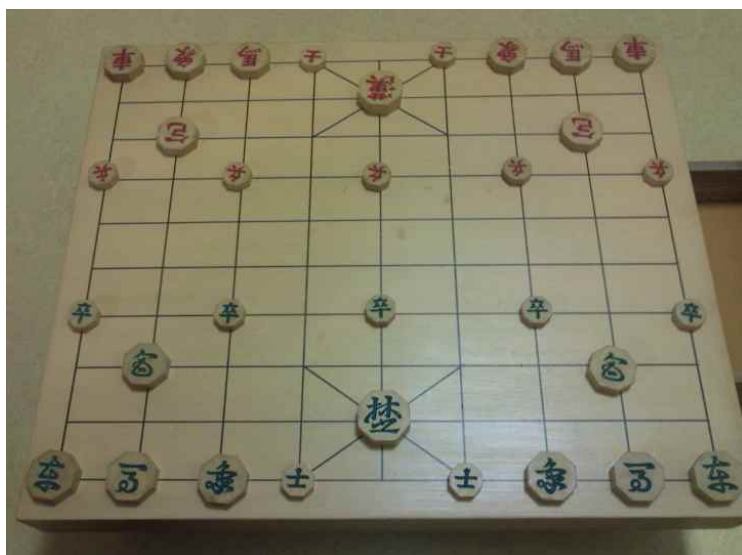


1.2 Comparison of pieces used in P. R. China (leftmost 2 columns), Taiwan (Middle 2 columns) and R. O. Korea (rightmost 2 columns).

- Six pieces in red rectangles used in R. O. Korea are different from those used in P. R. China or Taiwan.

China		Korean		Name		
Red	Black					
帅	將	帥	將	漢	禁	Marshal, General (King)
仕	士	仕	士	士	士	Mandarin (Assistant)
相	象	相	象	象	象	Prime minister, Elephant
车	車	車	車	車	車	Chariot (Rook)
马	馬	馬	馬	馬	馬	Horse 2
炮	砲	礮	砲	包	包	Cannon
兵	卒	兵	卒	兵	卒	Soldier (Pawn)

1.3 Chinese chess board played in R. O. Korea



2. R. O. Korea's suggestions

2.1 R. O. Korea suggests that an annotation "(blue or green)" be added to names of five symbols as shown below.

[P. R. China's proposal in WG2 N3910]

XX08 CHINESE CHESS SIMPLIFIED BLACK ASSISTANT
XX09 CHINESE CHESS SIMPLIFIED BLACK ELEPHANT
XX0D CHINESE CHESS SIMPLIFIED BLACK PAWN
XX13 CHINESE CHESS TRADITIONAL BLACK CHARIOT
XX14 CHINESE CHESS TRADITIONAL BLACK HORSE

--->

[R. O. Korea's suggestion]

XX08 CHINESE CHESS SIMPLIFIED BLACK ASSISTANT (blue or green)
XX09 CHINESE CHESS SIMPLIFIED BLACK ELEPHANT (blue or green)
XX0D CHINESE CHESS SIMPLIFIED BLACK PAWN (blue or green)
XX13 CHINESE CHESS TRADITIONAL BLACK CHARIOT (blue or green)
XX14 CHINESE CHESS TRADITIONAL BLACK HORSE (blue or green)

= **Rationale:** In Korea, red color is used for one side. For the other side, we used to use blue; however, these days, green seems more widely used than blue. In contract to China's convention, black is never (rarely) used in Korea.

Therefore, R. O. Korea suggests that an annotation "(blue or green)" be added to 5 symbols that are proposed by P. R. China in WG2 N3910 and also used in R. O. Korea.

2.2 R. O. Korea suggests that "SIMPLIFIED" be changed to "TRADITIONAL" in 8 symbols in WG2 N3910.

[P. R. China's proposal in WG2 N3910]

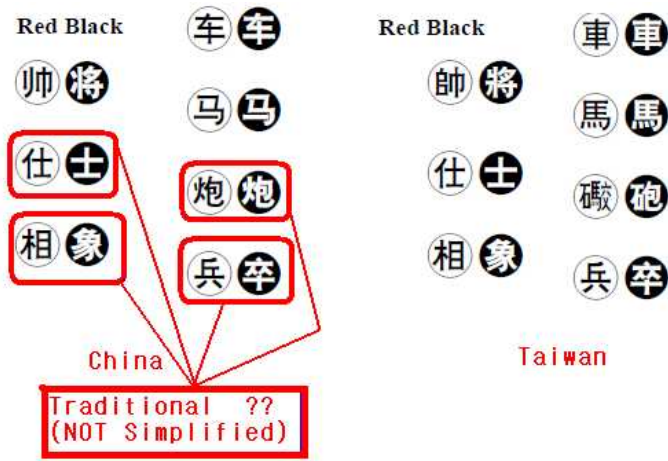
- XX01 CHINESE CHESS SIMPLIFIED RED MANDARIN
- XX02 CHINESE CHESS SIMPLIFIED RED ELEPHANT
- XX05 CHINESE CHESS SIMPLIFIED RED CANNON
- XX06 CHINESE CHESS SIMPLIFIED RED PAWN
- XX08 CHINESE CHESS SIMPLIFIED BLACK ASSISTANT
- XX09 CHINESE CHESS SIMPLIFIED BLACK ELEPHANT
- XX0C CHINESE CHESS SIMPLIFIED BLACK CANNON
- XX0D CHINESE CHESS SIMPLIFIED BLACK PAWN

—>

[R. O. Korea's suggestion]

- XX01 CHINESE CHESS TRADITIONAL RED MANDARIN
- XX02 CHINESE CHESS TRADITIONAL RED ELEPHANT
- XX05 CHINESE CHESS TRADITIONAL RED CANNON
- XX06 CHINESE CHESS TRADITIONAL RED PAWN
- XX08 CHINESE CHESS TRADITIONAL BLACK ASSISTANT
- XX09 CHINESE CHESS TRADITIONAL BLACK ELEPHANT
- XX0C CHINESE CHESS TRADITIONAL BLACK CANNON
- XX0D CHINESE CHESS TRADITIONAL BLACK PAWN

= Rationale: The 8 Chinese characters in red rectangles seem traditional, NOT simplified.



2.3 R. O. Korea suggests that 6 more symbols be added to UCS for pieces of Chinese chess played in R. O. Korea.

- R. O. Korea made two tentative proposals for names of these 6 symbols. Comments are welcome.

[Proposal 3A]

漢, CHINESE CHESS TRADITIONAL RED KING
士, CHINESE CHESS TRADITIONAL RED ASSISTANT ALTERNATIVE FORM
象, CHINESE CHESS TRADITIONAL RED ELEPHANT ALTERNATIVE FORM
包, CHINESE CHESS TRADITIONAL RED CANNON ALTERNATIVE FORM
楚, CHINESE CHESS TRADITIONAL BLACK KING (blue or green)
包, CHINESE CHESS TRADITIONAL BLACK CANNON ALTERNATIVE FORM (blue or green)

[Proposal 3B]

漢, CHINESE CHESS TRADITIONAL RED GENERAL ALTERNATIVE FORM
士, CHINESE CHESS TRADITIONAL RED ASSISTANT ALTERNATIVE FORM
象, CHINESE CHESS TRADITIONAL RED ELEPHANT ALTERNATIVE FORM
包, CHINESE CHESS TRADITIONAL RED CANNON ALTERNATIVE FORM
楚, CHINESE CHESS TRADITIONAL BLACK GENERAL ALTERNATIVE FORM (blue or green)
包, CHINESE CHESS TRADITIONAL BLACK CANNON ALTERNATIVE FORM (blue or green)

= Rationale:

- As you can see in 1.2 above, six pieces used in R. O. Korea are different from those used in P. R. China or Taiwan.
 - Since pieces used in R. O. Korea have TRADITIONAL characters, names contain TRADITIONAL.
- In R. O. Korea, most of the time, blue/green side uses cursive Chinese characters for some (five) symbols. However, R. O. Korea decided not to suggest cursive symbols. Traditional characters seem O.K. for blue/green side.
- As mentioned in 2.1 above, an annotation "(blue or green)" was added to 2 "Black" pieces.

d) For pieces used in R. O. Korea that correspond to Chinese/Taiwanese symbols, the phrase "ALTERNATIVE FORM" was added to their names.

– In Proposal 3A, there is an exception. For two KINGS, the phrase "ALTERNATIVE FORM" was not added to their names, since the word "KING" was not used in names of Chinese/Taiwanese symbols.

e) Names of symbols for China/Taiwan contains GENERAL (將) or MARSHAL (帥).

– In Proposal 3A, "KING" was used in names for Cho (楚) and Han (漢).

– In Proposal 3B, "GENERAL ALTERNATIVE FORM" was used in names for Cho (楚) and Han (漢). "ALTERNATIVE FORM" was added since "GENERAL" is already used in China/Taiwan symbols; otherwise, names for Chinese/Taiwanese symbols and names for Korean symbols would become one and the same.

2.4 R. O. Korea suggests that the name of XX14 be changed as follows:

XX14 CHINESE CHESS BLACK HORSE **OF TRADITIONAL**

—>

XX14 CHINESE CHESS **TRADITIONAL** BLACK HORSE

= Rationale: The name for the above piece, XX14, is in a format different from that of names of other pieces. Unless there is a specific reason to do so, it seems better to change its name so that its name looks similar to names of the others.

3. R. O. Korea supports to add 12 symbols to UCS for drawing Chinese chess board as proposed by P. R. China.

* * *

Attachment 1: Names of Chinese chess symbols (WG2 N3910)

HEX	NAME
XX00	CHINESE CHESS SIMPLIFIED RED MARSHAL
XX01	CHINESE CHESS SIMPLIFIED RED MANDARIN
XX02	CHINESE CHESS SIMPLIFIED RED ELEPHANT
XX03	CHINESE CHESS SIMPLIFIED RED CHARIOT
XX04	CHINESE CHESS SIMPLIFIED RED HORSE
XX05	CHINESE CHESS SIMPLIFIED RED CANNON
XX06	CHINESE CHESS SIMPLIFIED RED PAWN
XX07	CHINESE CHESS SIMPLIFIED BLACK GENERAL
XX08	CHINESE CHESS SIMPLIFIED BLACK ASSISTANT
XX09	CHINESE CHESS SIMPLIFIED BLACK ELEPHANT
XX0A	CHINESE CHESS SIMPLIFIED BLACK CHARIOT
XX0B	CHINESE CHESS SIMPLIFIED BLACK HORSE
XX0C	CHINESE CHESS SIMPLIFIED BLACK CANNON
XX0D	CHINESE CHESS SIMPLIFIED BLACK PAWN
XX0E	CHINESE CHESS TRADITIONAL RED MARSHAL
XX0F	CHINESE CHESS TRADITIONAL RED CHARIOT
XX10	CHINESE CHESS TRADITIONAL RED HORSE
XX11	CHINESE CHESS TRADITIONAL RED CANNON
XX12	CHINESE CHESS TRADITIONAL BLACK GENERAL
XX13	CHINESE CHESS TRADITIONAL BLACK CHARIOT
XX14	CHINESE CHESS BLACK HORSE OF TRADITIONAL
XX15	CHINESE CHESS TRADITIONAL BLACK CANNON

Attachment 2: Table of Chinese chess symbols (WG2 N3910)

Table: Chinese chess symbol

	XX0	XX1	XX2
0	帥	馬	非
1	仕	礮	米
2	相	將	
3	車	車	
4	炮	馬	
5	馬	砲	
6	兵	下	
7	將	丌	
8	士	丩	
9	象	丮	
A	車	丯	
B	馬	丰	
C	炮	丱	
D	卒	串	
E	帥	𠂔	
F	車	𠂕	

* * *