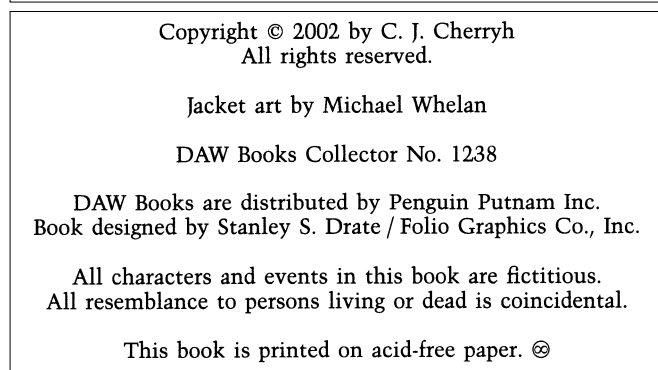
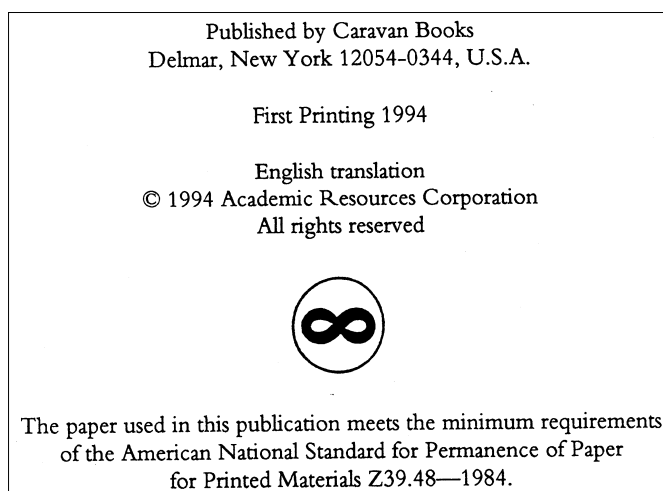


Universal Multiple-Octet Coded Character Set  
International Organization for Standardization  
Organisation internationale de normalisation  
Международная организация по стандартизации

**Doc Type: Working Group Document****Title: Proposal to encode five miscellaneous symbols in the UCS****Source: Michael Everson****Status: Individual Contribution****Action: For consideration by JTC1/SC2/WG2 and UTC****Date: 2003-09-04**


This document updates N2586 with changed code positions for some characters. Five symbol characters are proposed in this document. The first is another recycling-related symbol, the PERMANENT PAPER SIGN, proposed for U+267E, which is widely used in packaging and publishing to indicate the use of acid-free paper. This symbol has been formally standardized by ANSI (Z39.48 – 1984) and appears in ISO 9706.

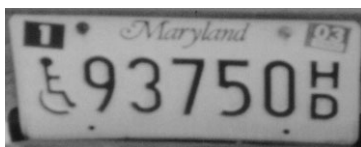
267E  PERMANENT PAPER SIGN

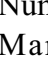
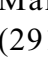
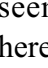


Above, from the copyright page of a book published in 1994. Top right, from a box of laserprinter paper, 2003. Bottom right, from the copyright page of a book published in 2002.


The second is the ubiquitous WHEELCHAIR SYMBOL, proposed for U+267F.

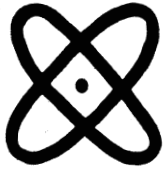
267F  WHEELCHAIR SYMBOL



Number plates from Arizona (-577E), Maryland (93750<sup>H</sup>), and Virginia (291400); apart from the otherwise very common use of this symbol, it seems obvious that the use illustrated here is indicative of a potential use for it in governmental databases.

The third character proposed is the ATOM SYMBOL, proposed for U+269B. This symbol consists of an atomic nucleus with three electron orbits circling it; it is a well-known symbol, and has even been introduced into heraldry (see the coat of arms of the U.S. 10th Ordnance Battalion; the grant of arms was made on 1954-11-09). This character differs from U+2622 RADIOACTIVE SIGN in that it is not used a warning sign for radioactivity, but rather identifies atomic physics, and, as stated in Swedish below, from Liungman's entry in *Tanketecken*, is used to indicate atomic power and atomic power plants.

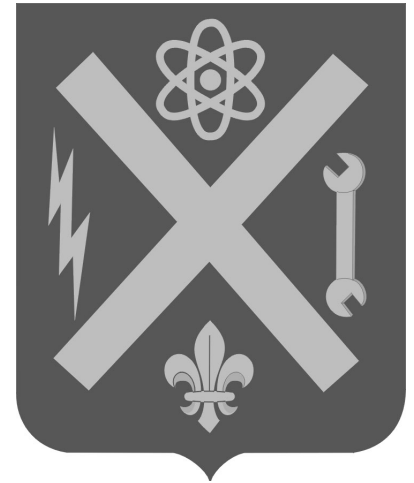
269B  ATOM SYMBOL



☼ står för kärnkraftverk på en del kartor och ☼ är det vanligaste ideogrammet för *kärnkraft* och *kärnkraftverk* på kartor och i övrigt.



“X stands for atomic power plant on a number of maps and ☼ is the most common ideogram for *atomic power* and *atomic power plants* on maps and otherwise.”



Shield: Crimson and yellow are the colors for the Ordnance Corps. The heraldic saltire simulates the Roman numeral “ten” and alludes to the name of the organization. The atom symbol, wrench and electric bolt, indicate the battalion's nuclear, mechanical, and electrical support mission. The fleur-de-lis symbolizes the unit's European World War II campaign honors.

The fourth character proposed is the SHAMROCK, proposed for U+2618. In addition to use as a general dingbat, this character is sometimes used in lexicography to indicate botany or agriculture. The sample below is taken from a monolingual Icelandic dictionary, 1992. The annotation to U+263F BLACK CLUB SUIT is incorrect. Shamrocks have heart-shaped leaves; it is clovers which have round leaves. In addition, the club suit derives from the medieval tarot suit of batons or wands.

2618  SHAMROCK

**hnjá-kollur** κ það sem skagar mest fram á hnénu þegar fóturinn er krepptur, mót lærleggjar og fótleggjar að framanverðu. -**liða** gras η ☼ planta af grasætt (*Alopecurus geniculatus*).  
**hnjám** DGF FT af hné.  
**hnjápuntur** κ ☼ knjápuntur, ættkvísl grasættar (*Sieglingia*); plöntuteg. (*S. decumbens*).

The fifth character proposed is the FLEUR-DE-LIS, proposed for U+269C. This is a very old character, and is of particular interest as a *named* character: it is uniquely identified and recognized by its name. A stylized lily or lotus flower (or, say some, a stylized frog), this symbol has many meanings. As a heraldic sign it symbolizes martial strength (as seen in the military coat of arms shown above); it also symbolized royalty, and by extension perfection, light, and life. The Roman Catholic Church held that the lily was a special emblem of the Virgin Mary; the three petals of the FLEUR-DE-LIS made it also suitable to represent the Trinity. In many modern contexts, the FLEUR-DE-LIS symbolizes French culture in general or the Francophonie specifically. It is also an internationally-recognized symbol for Scouting. The FLEUR-DE-LIS appears on coins and seals from at least the 10th century CE and continues to be used today in a variety of contexts.

269C  FLEUR-DE-LIS

“The sacred triad returns in the **fleur-de-lis**, the **French lily**. The fleur-de-lis began to be used in the 1100s and then as a part of a large fleur-de-lis pattern. Later the character came to be used as an isolated ideogram for the *ruling power* (and claim to it) in *France*.

☼ is now also the **international scout symbol**.”



Det heliga tretalet återkommer i **fleur de lis**, den **franska liljan**. Fleur de lis började användas på 1100-talet och då som en del av ett stort fleur de lis-mönster. Efterhand började tecknet användas som isolerat ideogram för den *regerande makten* (och anspråk på den) i *Frankrike*.

☼ är numera också det **internationella scouttecknet**.

## **A. Administrative**

### **1. Title**

Proposal to encode four miscellaneous symbols in the UCS.

### **2. Requester's name**

Michael Everson

### **3. Requester type (Member body/Liaison/Individual contribution)**

Individual contribution.

### **4. Submission date**

2003-09-04

### **5. Requester's reference (if applicable)**

#### **6. Choose one of the following:**

##### **6a. This is a complete proposal**

Yes.

##### **6b. More information will be provided later**

No.

## **B. Technical -- General**

### **1. Choose one of the following:**

#### **1a. This proposal is for a new script (set of characters)**

No.

#### **Proposed name of script**

#### **1b. The proposal is for addition of character(s) to an existing block**

Yes.

##### **1b. Name of the existing block**

Miscellaneous Symbols

### **2. Number of characters in proposal**

5

### **3. Proposed category (see section II, Character Categories)**

Category A.

#### **4a. Proposed Level of Implementation (1, 2 or 3) (see clause 14, ISO/IEC 10646-1: 2000)**

Level 1.

#### **4b. Is a rationale provided for the choice?**

Yes.

#### **4c. If YES, reference**

Spacing characters.

#### **5a. Is a repertoire including character names provided?**

Yes.

#### **5b. If YES, are the names in accordance with the character naming guidelines in Annex L of ISO/IEC 10646-1: 2000?**

Yes.

#### **5c. Are the character shapes attached in a legible form suitable for review?**

Yes.

#### **6a. Who will provide the appropriate computerized font (ordered preference: True Type, or PostScript format) for publishing the standard?**

Michael Everson.

#### **6b. If available now, identify source(s) for the font (include address, e-mail, ftp-site, etc.) and indicate the tools used:**

Michael Everson, Fontographer.

#### **7a. Are references (to other character sets, dictionaries, descriptive texts etc.) provided?**

No.

#### **7b. Are published examples of use (such as samples from newspapers, magazines, or other sources) of proposed characters attached?**

Yes.

#### **8. Does the proposal address other aspects of character data processing (if applicable) such as input, presentation, sorting, searching, indexing, transliteration etc. (if yes please enclose information)?**

No.

**9. Submitters are invited to provide any additional information about Properties of the proposed Character(s) or Script that will assist in correct understanding of and correct linguistic processing of the proposed character(s) or script. Examples of such properties are: Casing information, Numeric information, Currency information, Display behaviour information such as line breaks, widths etc., Combining behaviour, Spacing behaviour, Directional behaviour, Default Collation behaviour, relevance in Mark Up contexts, Compatibility equivalence and other Unicode normalization related information. See the Unicode standard at <http://www.unicode.org> for such information on other scripts. Also see Unicode Character Database <http://www.unicode.org/Public/UNIDATA/>**

**UnicodeCharacterDatabase.html and associated Unicode Technical Reports for information needed for consideration by the Unicode Technical Committee for inclusion in the Unicode Standard.**

The characters should have the same properties as similar symbols.

## **C. Technical -- Justification**

**1. Has this proposal for addition of character(s) been submitted before? If YES, explain.**

No.

**2a. Has contact been made to members of the user community (for example: National Body, user groups of the script or characters, other experts, etc.)?**

No.

**2b. If YES, with whom?**

**2c. If YES, available relevant documents**

**3. Information on the user community for the proposed characters (for example: size, demographics, information technology use, or publishing use) is included?**

Publishers and general use..

**4a. The context of use for the proposed characters (type of use; common or rare)**

To indicate the use of acid-free paper, and to indicate services etc. available for handicapped people.

**4b. Reference**

**5a. Are the proposed characters in current use by the user community?**

Yes.

**5b. If YES, where?**

In general use.

**6a. After giving due considerations to the principles in Principles and Procedures document (a WG 2 standing document) must the proposed characters be entirely in the BMP?**

Yes..

**6b. If YES, is a rationale provided?**

Yes.

**6c. If YES, reference**

Keep with other miscellaneous symbols.

**7. Should the proposed characters be kept together in a contiguous range (rather than being scattered)?**

**8a. Can any of the proposed characters be considered a presentation form of an existing character or character sequence?**

No.

**8b. If YES, is a rationale for its inclusion provided?**

**8c. If YES, reference**

**9a. Can any of the proposed characters be encoded using a composed character sequence of either existing characters or other proposed characters?**

No.

**9b. If YES, is a rationale for its inclusion provided?**

**9c. If YES, reference**

**10a. Can any of the proposed character(s) be considered to be similar (in appearance or function) to an existing character?**

No.

**10b. If YES, is a rationale for its inclusion provided?**

**10c. If YES, reference**

**11a. Does the proposal include use of combining characters and/or use of composite sequences (see clauses 4.12 and 4.14 in ISO/IEC 10646-1: 2000)?**

No.

**11b. If YES, is a rationale for such use provided?**

**11c. If YES, reference**

**12a. Is a list of composite sequences and their corresponding glyph images (graphic symbols) provided?**

No.

**12b. If YES, reference**

**13a. Does the proposal contain characters with any special properties such as control function or similar semantics?**

No.

**13b. If YES, describe in detail (include attachment if necessary)**

**14a. Does the proposal contain any Ideographic compatibility character(s)?**

No.

**14b. If YES, is the equivalent corresponding unified ideographic character(s) identified?**